



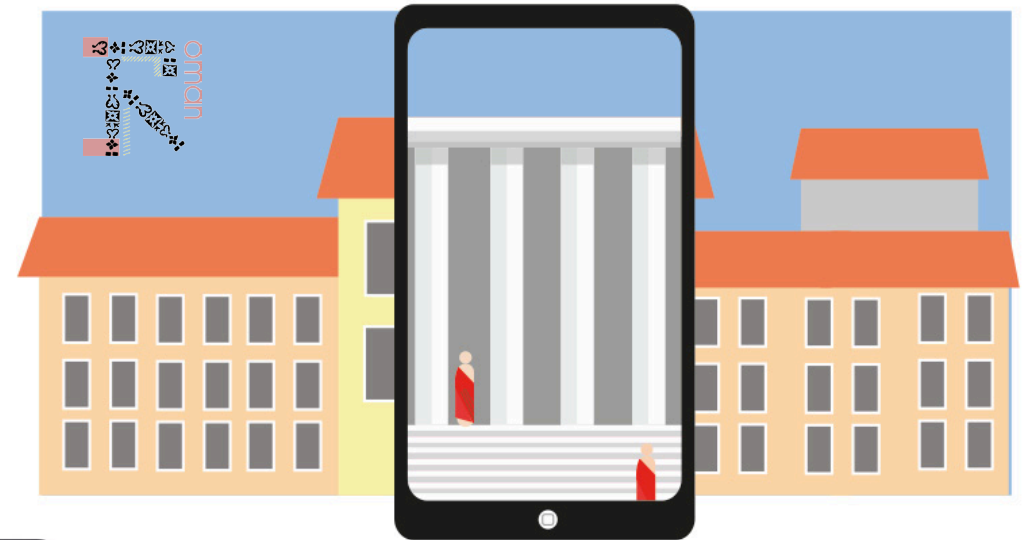
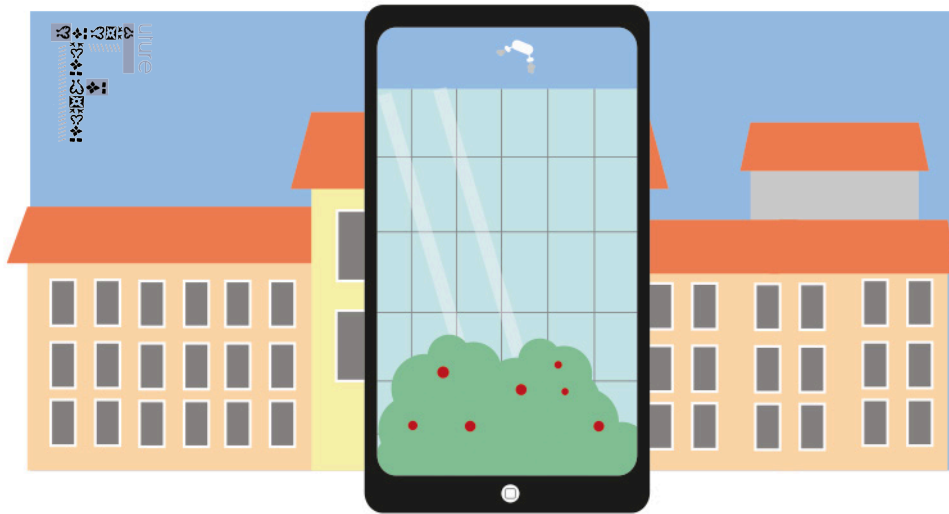
Timapp

HOW IT WORKS ?

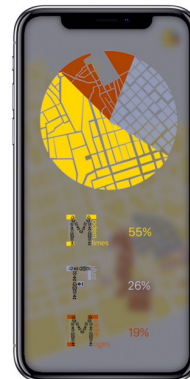
THE SCENARIO

In our app, we suggest a visit of the city of Lisbon based on layers of time, due to it's very long past with very distinct periods of time.

These layer will be placed one over the other, and the user will be able to choose what layer he wishes to see more clearly.

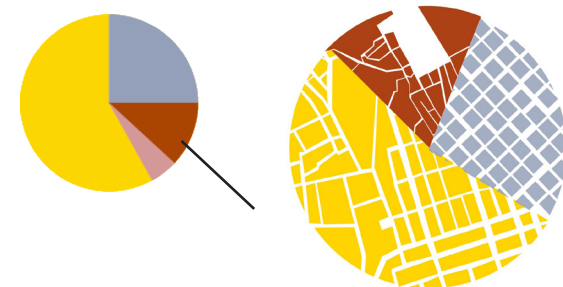


After you choose your period, you will have access to augmented reality that will present you site as it was in that time.



Statistics

we have created a spot where we can see what layer is the most used.



AROUND THE GRAPHISME LISBON'S CITY INSPIRATION

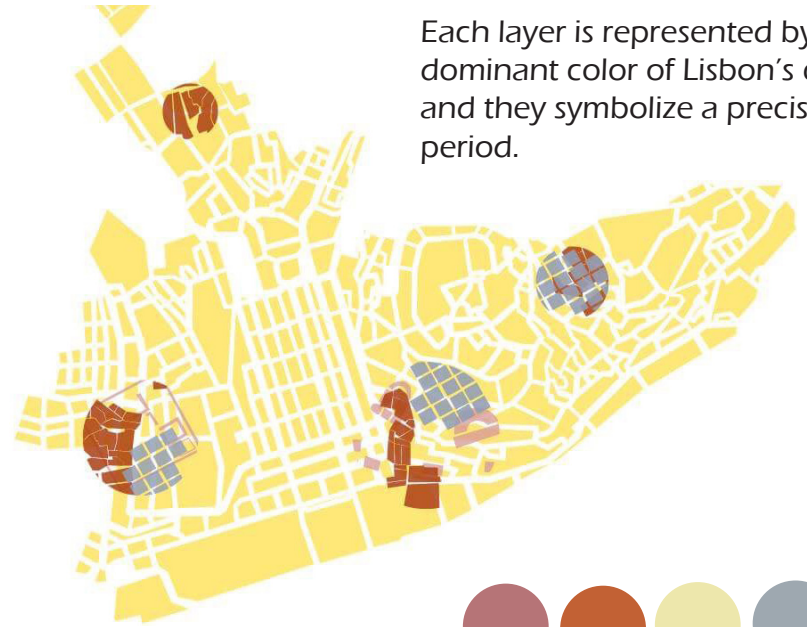
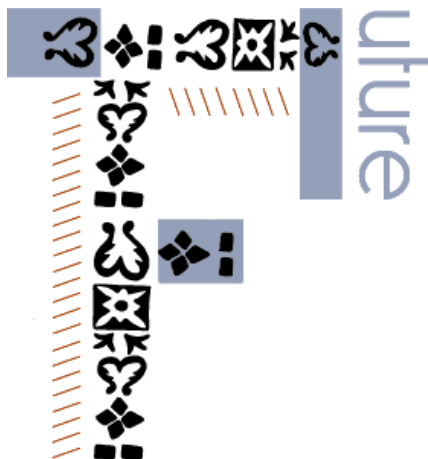


For the typography it was absolutely necessary to find the idea of layer, superposition

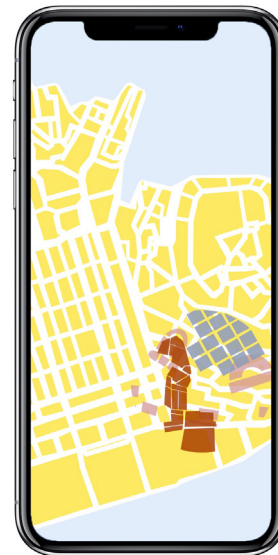
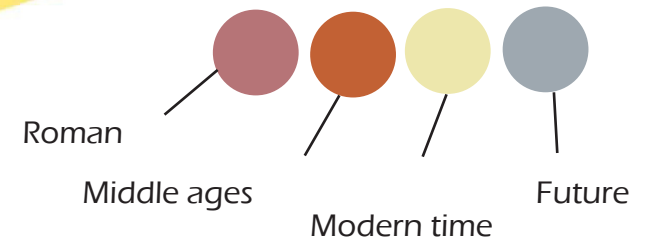
To treat the graphic aspect, we were inspired by the patterns and colors presented in the facades of the city.



We mixed the patterns of the facades and their colors.



Each layer is represented by a dominant color of Lisbon's city, and they symbolize a precise period.



GORGEOUS CHINCHILLAS

ALEXANDRE GOMEZ PARDO

NOEL MARTINS

PEDRO RODRIGO COSTA

SIDONIE BOURGUIGNON BERTHEUIL

YLONA RUIZ

ECOLE ESTIENNE
FBAUL - ARTES MULTIMEDIA